



PA EITC

Businesses contribute, schools improve, children benefit.

What is EITC?

Educational Improvement Tax Credit (EITC) is a program in Pennsylvania that provides tax credits to businesses and individuals who contribute to approved Scholarship Organizations or Special Purpose Entities (SPEs).

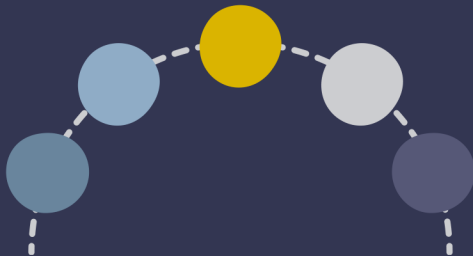


Why a Special Purpose Entity (SPE)?

SPE's play a key role in the EITC program by facilitating the process of receiving contributions and directing them to eligible schools as designated by the donors.

Benefit to Schools

Catholic schools benefit financially from the EITC program through the contributions made by businesses and individuals, which helps support various school initiatives, programs, and operational costs.



Benefit to Parents

As parents, your children will experience improved learning environments, expanded opportunities, and enriched educational experiences funded by your tax dollars through EITC contributions.

How to Participate

Contact our SPE or your school for details on enrolling in EITC.



PA EITC

Businesses contribute, schools improve, children benefit.

Example: 2 children, Catholic rate

	What I Pay	What School Receives
Tuition	(\$9,390)	\$9,390
SPE	(\$3,500)	\$3,500
Tax Credit/Rebate (90% of Contribution)	+\$3,150	-
Discount from School (10% of donation amount)	-\$350	(\$350)
Total:	\$9,390	\$12,540

How it works

01.

CHECK YOUR ELIGIBILITY

Calculate your income and multiply by PA's tax rate (3.07%) to find your max contribution.

02.

COMMIT AND CONTRIBUTE

Sign up with our SPE, committing to at least \$1000 yearly for 2 years. Make your initial contribution.



03.

TAX PAPERWORK

In February, you receive tax docs from our SPE. PA verifies your credit and transfers it to your ID. You'll get Form 1123 from our SPE, showing your credit transfer. Also, get Schedule K-1 for federal tax filing, showing your share in our SPE. EITC credits start processing in July and disburse in August.